



KIMBERLY-CLARK*
Facial Protection



Breathe Easy. Worry Less.



Kimberly-Clark

*Trusted Clinical Solutions**

The Right Protection: Innovation Plus Performance

Kimberly-Clark is a market leading provider of infection control, OR, and critical care solutions that help prevent Healthcare Associated Infections (HAIs), contributing to a safer environment for both healthcare workers and patients. KIMBERLY-CLARK* Face Masks offer the broadest range of styles, features, and levels of protection available today. The introduction of the FLUIDSHIELD* product line revolutionized the face mask industry by offering customers a line of fluid resistant, yet breathable face masks.

Defining Your Needs in a Face Mask

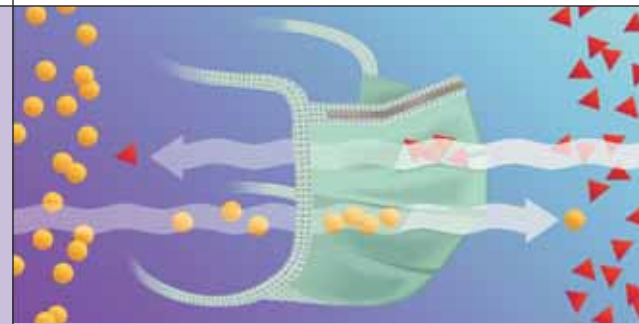
When selecting a face mask, consider the following:

- Protection
- Procedure
- Personal Comfort
- Personal Preference

Protection: Putting Safety First

The most important element in selecting a face mask is the confidence that comes from knowing that both the patient and the healthcare worker are adequately protected. When addressing facial protection, consider the following:

- What are the airborne infection risks?
- Is there a risk of contact with bodily fluids?
- Is eye protection required?
- Does the patient have respiratory symptoms?
- Does it meet OSHA's requirements for protection against bloodborne pathogens?



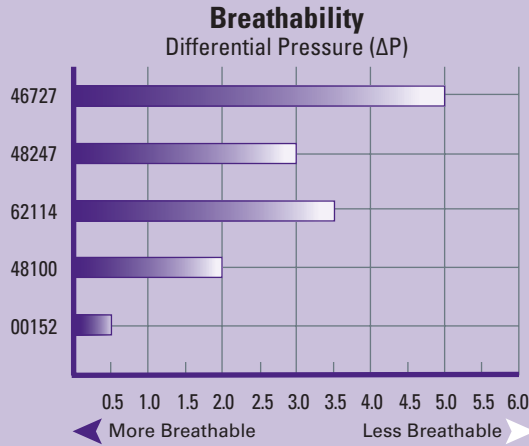
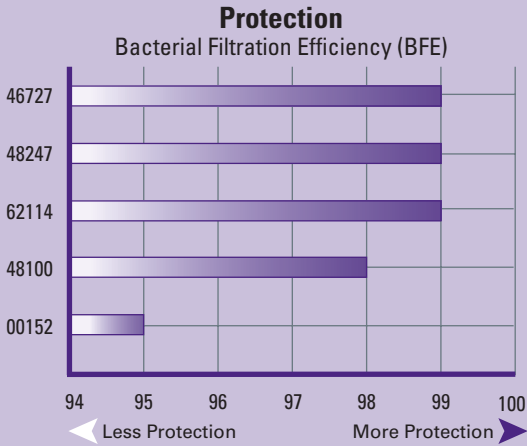
Protection from Airborne Contaminants

Bacterial Filtration Efficiency (BFE) testing determines the bi-directional filtration efficiency of a mask. The test is conducted by directing a known bacterial count toward one side of a mask. Any bacteria that pass through to the other side of the mask are counted, resulting in the BFE rating of the mask.



Protection from Fluids

A patented layer of LONCET* Breathable Film helps protect healthcare workers against exposure to blood and bodily fluids while maintaining "breathability", thus delivering the critical balance of protection and comfort to keep staff compliant.



These charts illustrate the protection and breathability of several of our face masks and show the correlation between protection and breathability. Generally, the more protection offered, the lower the breathability.

Procedure: What and Where

Selecting an appropriate face mask requires careful examination of the types of procedures that will be routinely conducted and where they will be performed.

- How long are the procedures?
- Does the procedure require an impervious gown?
- Is it an aerosol generating procedure?
- Does your facility or professional organization have policies or standards associated with the procedures?

Personal Comfort: Encouraging Compliance

“Breathability” is measured by differential pressure, or ΔP (the difference in air pressure on the inside of the mask vs. the outside of the mask during air exchange). The lower the ΔP , the more “breathable” the mask. Cool, easy breathing comfort encourages healthcare worker compliance – a key component in personal protection.

- How “breathable” is a mask?
- From what materials is the mask constructed?

Personal Preference

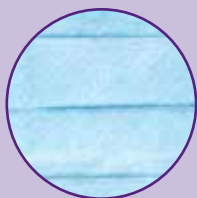
Just as procedures and environments vary, so do individual needs and preferences. The single most important factor in determining whether a mask is comfortable to a wearer is whether the mask’s features place the wearer at ease. We all have our own styles, likes and dislikes, and a face mask is one of the most personal products a healthcare professional wears.

Kimberly-Clark: A Full Line of Protection to Meet Your Needs



**NATURAL RUBBER
LATEX FREE**

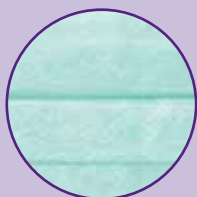
Kimberly-Clark offers facial protection products designed to meet industry standards and regulations, such as ASTM F2100, for specific clinical applications. The materials and donning attachments are sonically bonded, and all masks[†] have enclosed nosepieces to assist in conforming to the contours of the face. All face masks are natural rubber latex free. See enclosed technical documentation for performance data by category and code.



Standard Face Masks

Protection for General Patient Care

- Protective three-layer construction
- Exposure to blood and/or bodily fluids is not a risk
- Appropriate for general patient care and isolation



Specialty Face Masks

Unique Features to Accommodate a Vast Range of Individual Performance Needs and Clinical Requirements

- Fog reduction
- Larger breathing chambers for increased comfort
- Patented designs to enhance facial fit

[†] With the exception of cone-style masks.
^{††} ASTM F 1862, Standard Test Method for Resistance of Medical Face Masks to Penetration by Synthetic Blood (Horizontal Projection of Fixed Volume at Known Velocity)

KIMBERLY-CLARK* Facial Protection

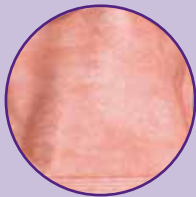


Fluid Resistant Face Masks

A Complete Family of Fluid-Resistant Facial Protection Products

FLUIDSHIELD products meet ASTM F1862 standards for facial protection against the penetration of blood and bodily fluids.^{††}*

- Constructed with a patented combination of materials to resist fluid penetration upon impact
- Features LONCET*
- Breathable film
- Some feature anti-glare visors
- Offered in a wide variety of styles and features



Particulate Filter Respirators

NIOSH Approved N95 Respirators

KIMBERLY-CLARK TECNOL* PFR95* N95 Particulate Filter Respirators and Surgical Masks are designed to provide an effective facial fit, as required for proper respiratory protection against airborne pathogens.*

- NIOSH approved
- Available in a variety of sizes and styles

Eyewear and Face Shields

Designed for use in situations where risk of exposure to blood and/or bodily fluids through splashing is possible

- Eyewear
- Lightweight
- Colorful frames
- Single-use lenses easily replaced into reusable frames
- Can be worn over most prescription glasses
- Constructed from natural rubber latex-free materials
- Face Shields equipped with a foam band and headband
- Can be worn with glasses or goggles
- Clear for maximum visibility
- Available in full length and 3/4 length visor
- Anti-Fog



For those procedures and environments where blood and/or bodily fluids are present, but the risk of exposure through splashing is low, we offer THE PROTECTOR* series of face masks. THE PROTECTOR* products are constructed with a fluid resistant outer layer, specifically designed to bridge the gap between your minimum and maximum fluid protection needs.

KIMBERLY-CLARK* Standard Face Masks: Protection for General Patient Care in Any Setting



Surgical Masks

	Code	Items/Box	Boxes/Case
SOFT TOUCH II* SURGICAL MASK	47500	50	6

Description: Pleat-Style with Horizontal Ties, Blue



THE LITE ONE* SURGICAL MASK, BLUE	48100	50	6
THE LITE ONE* SURGICAL MASK, GREEN	48105	50	6
THE LITE ONE* SURGICAL MASK, WHITE	62367	50	6

Description: Pleat-Style with Ties



CLASSIC* SURGICAL MASK, BLUE	48201	50	6
CLASSIC* SURGICAL MASK, GREEN	62369	50	6

Description: Pleat-Style with Ties



NURSES' SURGICAL MASK	48210	50	6
------------------------------	-------	----	---

Description: Pleat-Style with Ties, Blue



TEDDY BEAR SURGICAL MASK	48296	50	6
---------------------------------	-------	----	---

Description: Pleat-Style with Ties, Pink and Blue Teddy Bear Print



SO SOFT* SURGICAL MASK	48390	50	6
-------------------------------	-------	----	---

Description: Pleat-Style with Ties, White



THE FRIENDLY* SURGICAL MASK	59928	50	6
------------------------------------	-------	----	---

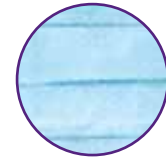
Description: Pleat-Style with Ties, White



FILTERMASK* SURGICAL MASK, GREEN	37525	50	6
---	-------	----	---

Description: Pouch-Style with Ties

KIMBERLY-CLARK* Facial Protection



	Code	Items/Box	Boxes/Case
DUCKBILL* SURGICAL MASK, BLUE	48220	50	6

Description: Pouch-Style with Ties

STANDARD SURGICAL MASK, BLUE	49701	50	6
-------------------------------------	-------	----	---

Description: Pouch-Style with Ties

Procedure Masks

PROCEDURE MASK, BLUE	47080	50	10
PROCEDURE MASK, GREEN	47085	50	10
PROCEDURE MASK, WHITE	47090	50	10
PROCEDURE MASK, PINK	47095	50	10
PROCEDURE MASK, YELLOW	47117	50	10

Description: Pleat-Style with Earloops

TEDDY BEAR PROCEDURE MASK	47295	50	10
----------------------------------	-------	----	----

Description: Pleat-Style with Earloops, Pink and Blue Teddy Bear Print

CHILD FACE MASK FEATURING DISNEY® CHARACTERS	47127	75	10
---	-------	----	----

Description: Pleat-Style with Earloops, DISNEY® Characters Print

THE LITE ONE* PROCEDURE MASK, FOAM BAND, BLUE	62356	50	10
--	-------	----	----

THE LITE ONE* PROCEDURE MASK, FOAM BAND, GREEN	62357	50	10
---	-------	----	----

Description: Pleat-Style with Earloops

STANDARD PROCEDURE MASK, BLUE	49700	50	10
--------------------------------------	-------	----	----

Description: Pleat-Style with Earloops

Cone Masks

CONE MASK, BLUE	00152	50	6
------------------------	-------	----	---

Description: Molded Cone-Style with Headband



KIMBERLY-CLARK* Specialty Face Masks:

Unique features to accommodate a vast range of individual performance needs and clinical requirements



Surgical Masks

	Code	Items/Box	Boxes/Case
FOG-FREE SURGICAL MASK, FOAM BAND, BLUE	49214	50	6

Description: Pleat-Style with Ties



ANTI-FOG SURGICAL MASK W/ DERMA-TOUCH* TAPE, FILM STRIP, GREEN	49215	50	6
---	-------	----	---

Description: Pleat-Style with Ties



ANTI-FOG SURGICAL MASK, FILM STRIP, GREEN	49235	50	6
--	-------	----	---

Description: Pleat-Style with Ties



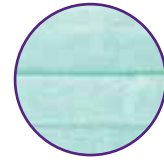
FOG-FREE DUCKBILL* SURGICAL MASK, FOAM BAND, BLUE	49216	50	6
--	-------	----	---

Description: Pouch-Style with Ties



FOG-FREE ULTI-MASK SURGICAL MASK, FOAM BAND, WHITE	49310	50	6
---	-------	----	---

Description: Pleat-Style with Ties



Fog-Free Procedure Masks

	Code	Items/Box	Boxes/Case
FOG-FREE PROCEDURE MASK, FOAM BAND, BLUE	62362	50	10
FOG-FREE PROCEDURE MASK, FOAM BAND, WHITE	62363	50	10

Description: Pleat-Style with Earloops

LAZER* Surgical Masks

LAZER* SURGICAL MASK	47625	35	6
LAZER* FOG-FREE SURGICAL MASK, FOAM BAND	47650	35	6

Description: Pleat-Style with Ties, Silver

PCM2000* Masks

PCM2000* MASK, REGULAR SIZE, BLUE	47700	50	6
PCM2000* MASK, REGULAR SIZE, YELLOW	47717	50	6

Description: Pouch-Style with Polyurethane Headbands



KIMBERLY-CLARK* Fluid Resistant Face Masks:

A complete family of fluid resistant facial protection



FLUIDSHIELD* Surgical Masks

	Code	Items/Box	Boxes/Case
FLUIDSHIELD* FOG-FREE SURGICAL MASK, FOAM BAND	48207	50	6
FLUIDSHIELD* SURGICAL MASK	48208	50	6

Description: Pleat-Style with Ties, Orange



FLUIDSHIELD* FOG-FREE SURGICAL MASK W/ SPLASHGUARD* VISOR, FOAM BAND

48237 25 4

FLUIDSHIELD* FOG-FREE SURGICAL MASK W/ WRAPAROUND SPLASHGUARD* ANTI-GLARE VISOR, FOAM BAND

48247 25 4

FLUIDSHIELD* SURGICAL MASK W/ WRAPAROUND SPLASHGUARD* VISOR

48248 25 4

Description: Pleat-Style with Ties, Orange



FLUIDSHIELD* DUCKBILL* SURGICAL MASK

48227 50 6

Description: Pouch-Style with Ties, Orange



FLUIDSHIELD* DUCKBILL* SURGICAL MASK W/ WRAPAROUND SPLASHGUARD* ANTI-GLARE VISOR

48228 25 4

Description: Pouch-Style with Ties, Orange



FLUIDSHIELD* TEDDY BEAR SURGICAL MASK

48297 50 6

Description: Pleat-Style with Ties, Pink and Blue Teddy Bear Print

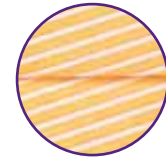
FLUIDSHIELD* PCM Masks

FLUIDSHIELD* PCM2000* MASK

47707 50 6

Description: Pouch-Style with Polyurethane Headbands, Regular Size, Orange





FLUIDSHIELD* Procedure Masks

	Code	Items/Box	Boxes/Case
FLUIDSHIELD* FOG-FREE PROCEDURE MASK, FOAM BAND	47107	40	10

Description: Pleat-Style with Earloops, Orange

FLUIDSHIELD* FOG-FREE PROCEDURE MASK W/ SPLASHGUARD* VISOR, FOAM BAND	47137	25	4
--	-------	----	---

FLUIDSHIELD* FOG-FREE PROCEDURE MASK W/ WRAPAROUND SPLASHGUARD* VISOR, FOAM BAND	47147	25	4
---	-------	----	---

Description: Pleat-Style with Earloops, Orange

FLUIDSHIELD* TEDDY BEAR PROCEDURE MASK	47297	40	10
---	-------	----	----

Description: Pleat-Style with Earloops, Pink and Blue Teddy Bear Print

FLUIDSHIELD* FOG-FREE TEDDY BEAR PROCEDURE MASK W/ WRAPAROUND SPLASHGUARD* VISOR, FOAM BAND	47298	25	4
--	-------	----	---

Description: Pleat-Style with Earloops, Pink and Blue Teddy Bear Print

The PROTECTOR* Surgical Masks

SURGICAL MASK, FOAM BAND	62113	50	6
---------------------------------	-------	----	---

Description: Pleat-Style with Ties, Blue with Orange Diamond Print

THE PROTECTOR* FOG-FREE SPLASH RESISTANT SURGICAL MASK W/ WRAPAROUND SPLASHGUARD* VISOR, FOAM BAND	62114	25	4
---	-------	----	---

Description: Pleat-Style with Ties, Blue with Orange Diamond Print

The PROTECTOR* Procedure Masks

THE PROTECTOR* SPLASH RESISTANT PROCEDURE MASK	62115	50	10
---	-------	----	----

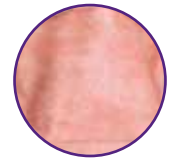
Description: Pleat-Style with Earloops, Blue

THE PROTECTOR* FOG-FREE SPLASH RESISTANT PROCEDURE MASK W/ WRAPAROUND SPLASHGUARD* VISOR, FOAM BAND	62116	25	4
--	-------	----	---

Description: Pleat-Style with Earloops, Blue



KIMBERLY-CLARK* Respirator Face Masks: NIOSH Approved N95 Respirators



Respirator Masks

	Code	Items/Box	Boxes/Case
FLUIDSHIELD* PFR95* N95 PARTICULATE FILTER RESPIRATOR AND SURGICAL MASK, REGULAR SIZE	46727	35	6
FLUIDSHIELD* PFR95* N95 PARTICULATE FILTER RESPIRATOR AND SURGICAL MASK, SMALL SIZE	46827	35	6
FLUIDSHIELD* PFR95* N95 PARTICULATE FILTER RESPIRATOR, SAFETY SEAL FILM, REGULAR SIZE	46767	35	6
FLUIDSHIELD* PFR95* N95 PARTICULATE FILTER RESPIRATOR, SAFETY SEAL FILM, SMALL SIZE	46867	35	6

Description: Pouch-Style with Polyurethane Headbands, Orange



PFR95* N95 PARTICULATE FILTER RESPIRATOR AND SURGICAL MASK, REGULAR SIZE	62126	50	6
PFR95* N95 PARTICULATE FILTER RESPIRATOR AND SURGICAL MASK, SMALL SIZE	62355	50	6

Description: Pouch-Style with Polyurethane Headbands, White

Accessories



PORTED FLUIDSHIELD* PFR95* N95 PARTICULATE FILTER RESPIRATOR AND SURGICAL MASK, REGULAR SIZE	99175	100	1
PORTED FLUIDSHIELD* PFR95* N95 PARTICULATE FILTER RESPIRATOR AND SURGICAL MASK, SMALL SIZE	99181	100	1
PORTED FLUIDSHIELD* PFR95* N95 PARTICULATE FILTER RESPIRATOR, SAFETY SEAL FILM, REGULAR SIZE	99178	100	1
PORTED FLUIDSHIELD* PFR95* N95 PARTICULATE FILTER RESPIRATOR, SAFETY SEAL FILM, SMALL SIZE	99184	100	1

Description: Ported Pouch-Style with Polyurethane Headbands, Orange, for use in Quantitative Fit Testing ONLY



QUALITATIVE FIT TESTING KIT	47950	1	1
------------------------------------	-------	---	---

Description: Contains instructions and materials to conduct Fit Testing of PFR95* N95 Respirators per OSHA requirements (75-100 tests/kit)

EXTRA COMPONENTS ALSO AVAILABLE:

SACCHARIN SOLUTIONS	99003	2	1
BITREX SOLUTIONS	99009	2	1
HOOD ASSEMBLIES	99015	2	1
NEBULIZERS	99018	2	1

KIMBERLY-CLARK* Respirator Face Masks: Eyewear and Face Shields for Protection from Splashing or Spraying

SAFEVIEW* Eyewear



Functional Benefits:

- For use in situations which may involve splashing or spraying
- Designed to be lightweight for added comfort in use
- Shipped with colorful frames to appeal to a variety of preferences
- Single-use lenses may be easily replaced into reusable frames
- Designed to be easily worn over most prescription glasses
- Constructed from natural rubber latex-free materials

	Code	Items/Box	Boxes/Case
50 Assembled Glasses	SV50A	10	5
Description: 50 Assembled Glasses			
Frames	SV100F	10	10
Description: 100 Frames			
Replacement Lenses	SV250L	25	10
Description: 250 Replacement Lenses			

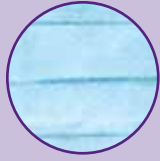
GUARDALL SHIELD* Face Shields



Functional Benefits:

- Designed for procedures and environments where risk of exposure to blood and/or bodily fluids through splashing is possible
- Equipped with a foam band and headband
- Can be worn with or without glasses or goggles
- Resistant to fogging
- Clear for maximum visibility
- Available in full length and 3/4 length visor

	Code	Items/Box	Boxes/Case
GUARDALL SHIELD*	41204	40	1
Description: Full Length Visor			
GUARDALL SHIELD*	41205	40	1
Description: 3/4 Length Visor			



Standard Masks

Surgical Masks

CODE	DESCRIPTION	PFE (0.1 µm)	BFE (3 µm)	ΔP (mm H ₂ O/cm ²)
47500	SOFT TOUCH* II SURGICAL MASK (Pleat-Style with Horizontal Ties, Blue)	≥ 97%	≥ 98%	< 3.0
48100	THE LITE ONE* SURGICAL MASK (Pleat-Style with Ties, Blue)	≥ 98%	≥ 98%	< 2.0
48105	THE LITE ONE* SURGICAL MASK (Pleat-Style with Ties, Green)	≥ 98%	≥ 98%	< 2.0
62367	THE LITE ONE* SURGICAL MASK (Pleat-Style with Ties, White)	≥ 98%	≥ 98%	< 2.0
48201	CLASSIC* SURGICAL MASK (Pleat-Style with Ties, Blue)	≥ 97%	≥ 96%	< 2.0
62369	CLASSIC* SURGICAL MASK (Pleat-Style with Ties, Green)	≥ 97%	≥ 96%	< 2.0
48210	NURSES' SURGICAL MASK (Pleat-Style with Ties, Blue)	≥ 98%	≥ 98%	< 3.0
48296	TEDDY BEAR SURGICAL MASK (Pleat-Style with Ties, Pink and Blue Teddy Bear Print)	≥ 97%	≥ 98%	< 3.0
48390	SO SOFT* SURGICAL MASK (Pleat-Style with Ties, White)	≥ 97%	≥ 98%	< 3.0
59928	THE FRIENDLY* SURGICAL MASK (Pleat-Style with Ties, White)	≥ 97%	≥ 96%	< 2.0
37525	FILTERMASK* SURGICAL MASK (Pouch-Style with Ties, Green)	≥ 97%	≥ 96%	< 3.0
48220	DUCKBILL* SURGICAL MASK (Pouch-Style with Ties, Blue)	≥ 97%	≥ 96%	< 1.5
49701	STANDARD SURGICAL MASK (Pleat-Style with Ties, Blue)	≥ 97%	≥ 98%	< 3.0

Procedure Masks

47080	PROCEDURE MASK (Pleat-Style with Earloops, Blue)	≥ 97%	≥ 96%	< 3.0
47085	PROCEDURE MASK (Pleat-Style with Earloops, Green)	≥ 97%	≥ 98%	< 3.0
47090	PROCEDURE MASK (Pleat-Style with Earloops, White)	≥ 97%	≥ 98%	< 3.0
47095	PROCEDURE MASK (Pleat-Style with Earloops, Pink)	≥ 97%	≥ 98%	< 3.0
47117	PROCEDURE MASK (Pleat-Style with Earloops, Yellow)	≥ 97%	≥ 96%	< 3.0
47295	TEDDY BEAR PROCEDURE MASK (Pleat-Style with Earloops, Pink and Blue Teddy Bear Print)	≥ 97%	≥ 98%	< 3.0
47127	CHILD FACE MASK FEATURING DISNEY® CHARACTERS (Pleat-Style with Earloops, MICKEY AND FRIENDS® Print)	≥ 97%	≥ 96%	< 1.5
49700	STANDARD PROCEDURE MASK (Pleat-Style with Earloops, Blue)	≥ 97%	≥ 98%	< 3.0
62356	THE LITE ONE* PROCEDURE MASK (Pleat-Style with Earloops, Blue)	≥ 98%	≥ 98%	< 2.0
62357	THE LITE ONE* PROCEDURE MASK (Pleat-Style with Earloops, Green)	≥ 98%	≥ 98%	< 2.0

Cone Masks

00152	CONE MASK (Molded Cone-Style with Headband, Blue)	N/A	≥ 95% ¹	< 0.5
-------	--	-----	--------------------	-------

Specialty Masks

Surgical Masks

CODE	DESCRIPTION	PFE (0.1 µm)	BFE (3 µm)	ΔP (mm H ₂ O/cm ²)
49214	FOG-FREE SURGICAL MASK, FOAM BAND (Pleat-Style with Ties, Blue)	≥ 98%	≥ 98%	< 3.0
49215	ANTI-FOG SURGICAL MASK W/ DERMA-TOUCH* TAPE, FILM STRIP (Pleat-Style with Ties, Green)	≥ 99%	≥ 98%	< 3.0
49216	FOG-FREE DUCKBILL* SURGICAL MASK, FOAM BAND (Pouch-Style with Ties, Blue)	≥ 99%	≥ 98%	< 3.0
49235	ANTI-FOG SURGICAL MASK, FILM STRIP (Pleat-Style with Ties, Green)	≥ 99%	≥ 98%	< 3.0
49310	FOG-FREE ULTI-MASK SURGICAL MASK, FOAM BAND (Pleat-Style with Ties, White)	≥ 97%	≥ 98%	< 3.0

Procedure Masks

62362	FOG-FREE PROCEDURE MASK, FOAM BAND (Pleat-Style with Earloops, Blue)	≥ 99%	≥ 98%	< 3.0
		≥ 97%	≥ 98%	< 3.0
62363	FOG-FREE PROCEDURE MASK, FOAM BAND (Pleat-Style with Earloops, White)	≥ 97%	≥ 96%	< 2.0

Other Masks

47625	LAZER* SURGICAL MASK (Pleat-Style with Ties, Silver)	≥ 99%	≥ 99%	< 2.5
47650	LAZER* FOG-FREE SURGICAL MASK, FOAM BAND (Pleat-Style with Ties, Silver)	≥ 99%	≥ 99%	< 2.5
47700	PCM2000* MASK, REGULAR SIZE (Pouch-Style with Polyurethane Headbands, Blue)	≥ 99%	≥ 99%	< 2.0
47717	PCM2000* MASK, REGULAR SIZE (Pouch-Style with Polyurethane Headbands, Yellow)	≥ 99%	≥ 99%	< 2.0





Respirator Masks

CODE	DESCRIPTION	PFE (0.1 µm)	BFE (3 µm)	ΔP (mm H ₂ O/cm ²)	ASTM (80, 120, 160 mm Hg)
46727	FLUIDSHIELD* PFR95* N95 PARTICULATE FILTER RESPIRATOR AND SURGICAL MASK, REGULAR SIZE (Pouch-Style with Polyurethane Headbands, Orange)	≥ 99%	≥ 99%	< 5.0	160
46827	FLUIDSHIELD* PFR95* N95 PARTICULATE FILTER RESPIRATOR AND SURGICAL MASK, SMALL SIZE (Pouch-Style with Polyurethane Headbands, Orange)	≥ 99%	≥ 99%	< 5.5	160
46767	FLUIDSHIELD* PFR95* N95 PARTICULATE FILTER RESPIRATOR WITH SAFETY SEAL AND SURGICAL MASK, REGULAR SIZE (Pouch-Style with Polyurethane Headbands, Orange)	≥ 99%	≥ 99%	< 5.0	160
46867	FLUIDSHIELD* PFR95* N95 PARTICULATE FILTER RESPIRATOR WITH SAFETY SEAL AND SURGICAL MASK, SMALL SIZE (Pouch-Style with Polyurethane Headbands, Orange)	≥ 99%	≥ 99%	< 5.5	160
62126	PFR95* N95 PARTICULATE FILTER RESPIRATOR AND SURGICAL MASK, REGULAR SIZE (Pouch-Style with Polyurethane Headbands, White)	≥ 99%	≥ 99%	< 5.0	120
62355	PFR95* N95 PARTICULATE FILTER RESPIRATOR AND SURGICAL MASK, SMALL SIZE (Pouch-Style with Polyurethane Headbands, White)	≥ 99%	≥ 99%	< 5.0	120



Fluid Resistant Masks

FLUIDSHIELD* Surgical Masks

48207	FLUIDSHIELD* FOG-FREE SURGICAL MASK, FOAM BAND (Pleat-Style with Ties, Orange)	≥ 99%	≥ 99%	< 3.0	160
48208	FLUIDSHIELD* SURGICAL MASK (Pleat-Style with Ties, Orange)	≥ 99%	≥ 99%	< 3.0	160
48237	FLUIDSHIELD* FOG-FREE SURGICAL MASK W/SPLASHGUARD* VISOR (Pleat-Style with Ties, Orange)	≥ 99%	≥ 99%	< 3.0	160
48247	FLUIDSHIELD* FOG-FREE SURGICAL MASK W/ WRAPAROUND SPLASHGUARD* ANTI-GLARE VISOR, FOAM BAND (Pleat-Style with Ties, Orange)	≥ 99%	≥ 99%	< 3.0	160
48248	FLUIDSHIELD* SURGICAL MASK W/ WRAPAROUND SPLASHGUARD* VISOR (Pleat-Style with Ties, Orange)	≥ 99%	≥ 99%	< 3.0	160
48227	FLUIDSHIELD* DUCKBILL* SURGICAL MASK (Pouch-Style with Ties, Orange)	≥ 99%	≥ 99%	< 3.0	160
48228	FLUIDSHIELD* DUCKBILL* SURGICAL MASK WRAPAROUND SPLASHGUARD* ANTI-GLARE VISOR (Pouch-Style with Ties, Orange)	≥ 99%	≥ 99%	< 3.0	160W/
48297	FLUIDSHIELD* TEDDY BEAR SURGICAL MASK (Pleat-Style with Ties, Pink and Blue Teddy Bear Print)	≥ 99%	≥ 99%	< 2.5	160

*Fluid Resistant Masks (cont.)***FLUIDSHIELD* Procedure Masks**

CODE	DESCRIPTION	PFE (0.1 µm)	BFE (3 µm)	ΔP (mm H ₂ O/cm ²)	ASTM (80, 120, 160 mm Hg)
47107	FLUIDSHIELD* FOG-FREE PROCEDURE MASK, FOAM BAND (Pleat-Style with Earloops, Orange)	≥ 99%	≥ 99%	< 2.5	160
47137	FLUIDSHIELD* FOG-FREE PROCEDURE MASK W/SPLASHGUARD* VISOR, FOAM BAND (Pleat-Style with Earloops, Orange)	≥ 99%	≥ 99%	< 2.5	160
47147	FLUIDSHIELD* FOG-FREE PROCEDURE MASK W/ WRAPAROUND SPLASHGUARD* VISOR (Pleat-Style with Earloops, Orange)	≥ 99%	≥ 99%	< 2.5	160
47297	FLUIDSHIELD* TEDDY BEAR PROCEDURE MASK (Pleat-Style with Earloops, Pink and Blue Teddy Bear Print)	≥ 99%	≥ 99%	< 2.5	160
47298	FLUIDSHIELD* FOG-FREE TEDDY BEAR PROCEDURE MASK W/ WRAPAROUND SPLASHGUARD* VISOR, FOAM BAND (Pleat-Style with Earloops, Pink and Blue Teddy Bear Print)	≥ 99%	≥ 99%	< 2.5	160
47707	FLUIDSHIELD* PCM2000* MASK, REGULAR SIZE (Pouch-Style with Polyurethane Headbands, Orange)	≥ 99%	≥ 99%	< 2.0	160

The PROTECTOR* Surgical Masks

62113	THE PROTECTOR* FOG-FREE SPLASH RESISTANT SURGICAL MASK, FOAM BAND (Pleat-Style with Ties, Blue/Orange Diamond Print)	≥ 99%	≥ 99%	< 3.5	120
62114	THE PROTECTOR* FOG-FREE SPLASH RESISTANT SURGICAL MASK W/ WRAPAROUND SPLASHGUARD* VISOR, FOAM BAND (Pleat-Style with Ties, Blue/Orange Diamond Print)	≥ 99%	≥ 99%	< 3.5	120

The PROTECTOR* Procedure Masks

62115	THE PROTECTOR* SPLASH RESISTANT PROCEDURE MASK (Pleat-Style with Earloops, Blue)	≥ 99%	≥ 99%	< 3.5	120
62116	THE PROTECTOR* FOG-FREE SPLASH RESISTANT PROCEDURE MASK W/ WRAPAROUND SPLASHGUARD* VISOR, FOAM BAND (Pleat-Style with Earloops, Blue)	≥ 99%	≥ 99%	< 3.5	120



Glossary of Terms

(PFE) PARTICLE FILTRATION EFFICIENCY

Measures the filtration efficiency of a face mask against small particles, usually 0.1 micron. Latex particles are aerosolized, dried, and passed through the test samples. Control counts are performed, without a test sample in the system. The filtration efficiency is calculated by comparing the results of the test samples to the results of the control counts. Reference ASTM F2299. A face mask is considered to be sub-micron filtering if PFE is greater than or equal to 98% as referenced in ASTM F 2100.³

(BFE IN VITRO) BACTERIAL FILTRATION EFFICIENCY

Used to determine the bacterial filtration efficiency (BFE) of various filtration materials. This test employs a ratio of the bacterial challenge counts to sample effluent counts to determine the percent bacterial filtration efficiency (%BFE). The test procedure allows a reproducible bacterial challenge to be delivered to test materials. This test is based on ASTM F 2101, and provides a standard procedure for comparison of filtration materials.

(BFE IN VIVO) MODIFIED GREENE AND VESLEY BACTERIAL FILTRATION EFFICIENCY

Provides a practical method of in vivo (wearing) testing of surgical face masks while maintaining a controlled environment. This technique evaluates the bacterial filtration efficiency of face masks. The method employs a quantitative measurement using an Andersen Sampler to determine the effectiveness of the mask at containing microorganisms.

(ΔP) DIFFERENTIAL PRESSURE

Determines the air exchange differential of porous materials. This technique employs a water manometer differential upstream and downstream of the test material at a constant flow rate.

(ASTM F1862) FACE MASK FLUID RESISTANCE TESTING

Developed to simulate a challenge to the fluid splash resistance of a face mask under conditions similar to actual use. During this test, face masks are insulted with synthetic blood and graded as a pass or fail. The masks are evaluated at three pressures, 80, 120, and 160. The higher the pressure at which a mask passes, the greater the fluid splash resistance.

N95 FILTER CERTIFICATION TEST

NIOSH required test for N95 respirators that measures filter efficiency and penetration of a 0.3µm sodium chloride particle aerosolized at a flow rate of 85 liters per minute at 95% filtration efficiency. OSHA requires that all respirators be properly fit tested using a quantitative or qualitative fit test when initially assigned to a user, and periodically thereafter.

¹ Modified Greene & Vesley.

² These products meet the NIOSH required sodium chloride test with 0.3µm particles at 95% filtration efficiency.

³ ASTM F2100 p.2 Table 1

Note: The preceding results for PFE, BFE and ΔP are averages based upon testing of representative samples selected randomly from production. ASTM F1862 results are based on the highest pressure for which the samples demonstrate an acceptable quality level (AQL) of 4.0.

Fluid Resistance Testing of Medical Face Masks (ASTM F 1862)

In 1998, ASTM published the first standard test method specifically addressing the protection provided by a face mask against a blood splash to the wearer's face. The current title of this standard is: Standard Test Method for Resistance of Medical Face Masks to Penetration by Synthetic Blood (Horizontal Protection of Fixed Volume at a Known Velocity), ASTM F1862. This procedure was developed to simulate a challenge to the fluid splash resistance of a face mask under conditions similar to actual use.

In this test, a mask is first conditioned at high humidity (85% RH) for four hours and then placed on a convex fixture simulating a human face. A 2mL spray of synthetic blood reagent is then projected horizontally at a controlled velocity from 12 inches away to strike the outer surface of the face mask at a normal (90°) angle. The velocity is set to simulate a discharge from a punctured blood vessel under a given blood pressure⁴. If any blood is visible on the inside of the mask after the spray is delivered, then that mask sample has failed the test at that blood pressure.

Masks are evaluated at three pressures: 80, 120, and 160 mm Hg⁵. The goal of the test is to determine the highest blood pressure at which confidence can be established that the face mask will provide fluid resistance. Masks are evaluated in sample sets of 32. At least 29 of 32 samples must pass the test for the mask to pass at the given blood pressure⁶.

The result of this test will be a blood pressure rating in millimeters of mercury which is the highest blood pressure at which the face mask has demonstrated reliable fluid resistance. This information can then be used to determine which mask is appropriate for a given procedure based on the expected threat of blood splash to a wearer's face.

This test method is incorporated into ASTM F2100, *Performance of Materials Used in Medical Face Masks*, where the Fluid Resistant category (the highest level of performance in this standard) has a 120 mm Hg requirement.

⁴ Bernoulli's equation is used to calculate the stream velocity which would occur for a puncture at a given blood pressure. Direct measurement of volume per unit time is used to establish velocity.

⁵ Average normal systolic blood pressure is 120 mm Hg.

⁶ This sampling is based on ANSI/ASQC sampling plans. Other sampling plans may be used when appropriate.

At Kimberly-Clark, our mission is to deliver clinical solutions that you can depend on to meet the demands of your fast-paced world. Whether your needs involve preventing healthcare-associated infections, surgical and digestive solutions or pain management, with Kimberly-Clark you'll always have one less worry.



Healthcare-Associated Infection Solutions



Surgical Solutions



Digestive Health



Pain Management



Commitment to Excellence

If, for any reason, our products do not meet your expectations, please let us know your comments or suggestions for improvement. Your input will result in a concerted effort on our part to meet your requirements. Our goal is to provide quality products that completely meet your needs time after time.

For more information, please call your Kimberly-Clark representative or visit our web site at www.kchealthcare.com/integuseal.

* Registered Trademark or Trademark of Kimberly-Clark Worldwide, Inc.
©2006 KCWW. All rights reserved. H00023

