

Kimberly-Clark Filtration

904L Rigid Pleat Filtration Media

Kimberly-Clark 904L Rigid Pleat media delivers ASHRAE MERV 15[†] efficiency and low airflow resistance in a highly durable synthetic construction.

This proprietary media uses a combination of bicomponent and microfiber layers to create a thin gradient density structure which is resistant to moisture, and will not promote microbial growth. The continuous thermally bonded fibers do not shed during manufacturing, and are less susceptible to damage in transit and in use compared to traditional glass media.

904L provides for a virtually indestructible pack for Minipleat, V-bank, Rigid Cell, and Aluminum Separator filters.

[†] In a well-constructed filter.



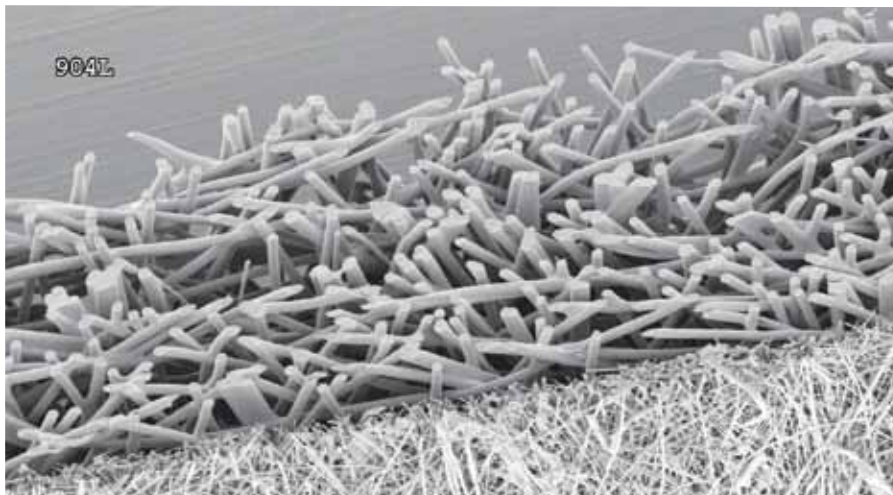


Attributes & Properties[◊]

Name:	Intrepid* 904L Air Filtration Media
Color:	White
Basis Weight:	3.75 ounces per square yard
Efficiency¹:	79%
Air Permeability:	70-80 cfm/sq. ft. @ 0.5" W.G.
MD Gurley Stiffness:	385 mgs
Production Reference:	MSR-00785 D904-XI



For more information on
Kimberly-Clark Filtration Products,
 visit us online at www.kcfiltration.com.



Photomicrograph of Intrepid* 904L Filtration Media

[◊] Unless otherwise noted, the material described in this document is available for commercial sale and sold with a limited warranty. Kimberly-Clark Corporation and/or Kimberly-Clark Worldwide retains all intellectual property rights to this material, including trademarks and trade names. If the material described is defined as developmental, the material properties are estimates only and are not warranted by Kimberly-Clark Corporation.

¹ Filtration efficiency determined using TSI Model 8130 automated filter tester using 0.1 µm count median diameter NaCl particles at 85 liters per minute.

Kimberly-Clark warrants that its products comply with K-C's standard specifications as of the delivery date to K-C's authorized distributors/direct purchasers. Except to the extent prohibited by applicable law: 1) **THIS WARRANTY IS IN LIEU OF ALL OTHER WARRANTIES, EXPRESS OR IMPLIED, INCLUDING ANY WARRANTY OF MERCHANTABILITY OR FITNESS FOR A PARTICULAR PURPOSE;** 2) K-C is not liable for any kind of special, incidental, or consequential damages; and 3) K-C's liability for breach of contract, tort, or other cause of action shall not exceed the product purchase price. Purchasers and users are deemed to have accepted the above warranty and limitation of liability, and cannot change the terms by verbal agreement or by any writing not signed by K-C. To the extent required by applicable law, K-C does not limit its liability for death/injury resulting from K-C's negligence.

®/* Trademarks of Kimberly-Clark Worldwide, Inc. Marques déposées de Kimberly-Clark Worldwide, Inc. © 2010 KCWW. K01732 K3882-09-01 1/10

**Reduce Today
Respect Tomorrow**

Reduce Today, Respect Tomorrow* is the **KIMBERLY-CLARK PROFESSIONAL*** approach to sustainability. It begins with the understanding that the way we use resources today shapes the world of tomorrow. And it has led us to focus on reducing consumption at every stage of the product lifecycle – from design and manufacture to distribution and disposal. Reduction is the key to lowering the environmental impact of our activities as well as those of customers. To learn more, visit www.kcpreducetoday.com