

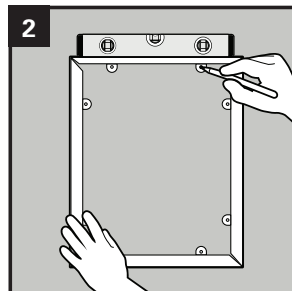
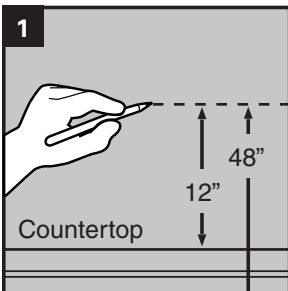
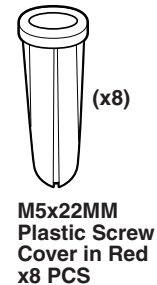
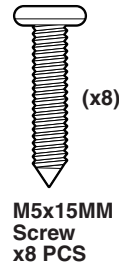
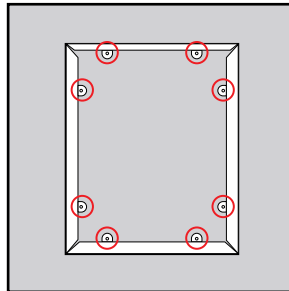
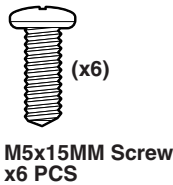
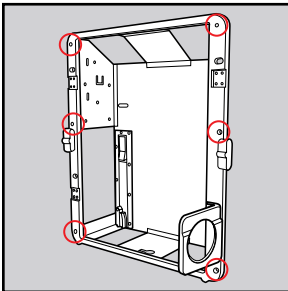
Installation instructions for the STAINLESS STEEL WALL UNIT AS A WALL MOUNTED DISPENSER IN A FRAME Code: 47873

IMPORTANT! For secure mounting, follow instructions thoroughly.

This dispenser can also be installed as a wall mounted unit using a stainless steel frame which is available for purchase. The frame comes with screws for installing the dispenser as a wall mounted unit and screws for attaching the housing to the frame. You will need various tools for this installation.

The frame comes with the following hardware in the accessory bag:

- 6 pcs 15mm screws
- 8 pcs 15mm screws
- 8 pcs 22 mm plastic anchors in red
- Instruction sheet



1-3. Begin the install, follow Steps 1 through 3 listed for the recessed dispenser install to begin the installation process, then begin with Step 4 below for the frame installation.

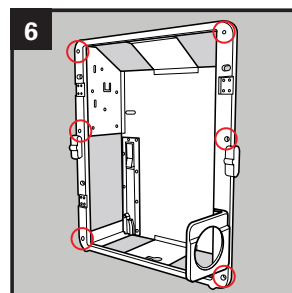
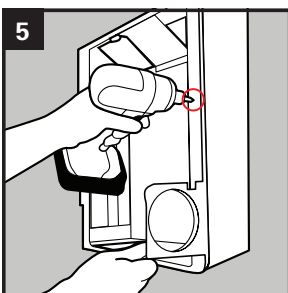
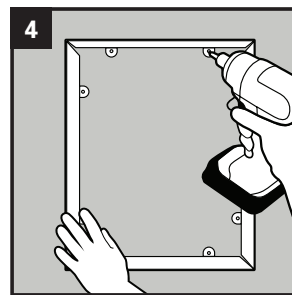
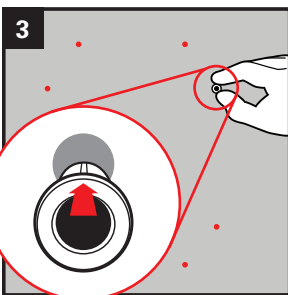
4. Take the frame and the instruction sheet out of the protective bag and remove the hardware kit taped to the frame.
5. Recheck the installation location markings set in Steps 1-3. Verify that you are at least 12 inches above a counter or 48 inches from the bottom of the dispenser to the floor. **(Figure 1)**

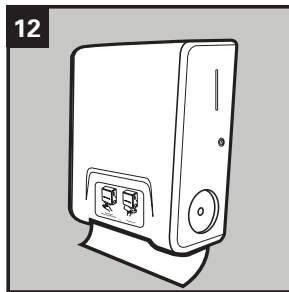
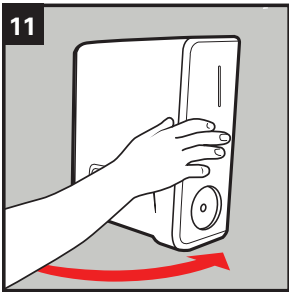
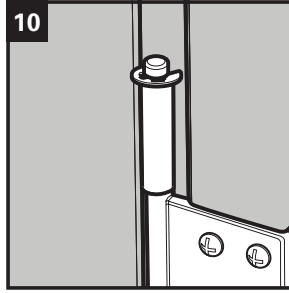
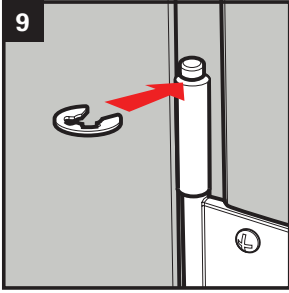
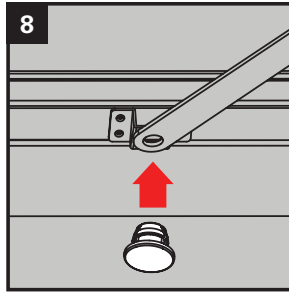
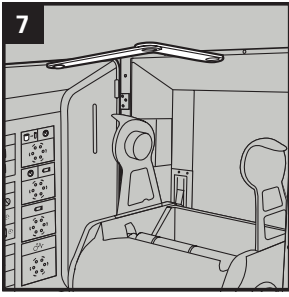
6. Mark the wall where the screws will be attached using the frame as the template. The 8 tabs are the locations for the screws to be placed for attaching the frame to the wall. Mark the tab hole locations and check for level. **(Figure 2)**

7. Set the 8 anchors in the wall using the areas marked from the previous step. **(Figure 3)**

8. Use the screws provided and attach the frame to the wall. **(Figure 4)**

9. Use the six 15mm screws to connect the Recessed Stainless Surface Mount frame to the Stainless Steel back housing while hanging on the wall. The 6 holes on the frame are for attaching the housing of the dispenser to the frame. The screws are press in so that will stay in place. **(Figure 5 & 6)**





10. Install the door. The swing arm is taped to the back housing, remove tape and install the swing arm by using the black plug that came with the dispenser into the cover. This prevents the door from sagging. **(Figure 7 & 8)**
11. Add the retaining rings commonly known as “c” clips on the hinges to keep the door in place. **(Figure 9 & 10)**
12. Install the module. For instructions on installing the module, see the module installation video or instructions provided with the module.
13. Close the door. **(Figure 11)**
14. Add the Use Label to the cover, the dispenser is now ready to use. **(Figure 12)**